

# GPS MAPS SELF-UPDATE INSTRUCTIONS (PC)

📍 **STEP 1** - [Log into your BRMB Account](#) and go to the product you would like to update and download the Updater file (7MB approximate).

PRODUCT UPDATES [View User Guide](#)

---

Current Version 2020 - Released August 2020. [See complete version update list.](#)

If you are having troubles accessing or implementing the downloadable updates, you can send in your current SD card or ask for a new DVD version. \*

\* Please note that this will be considered a new product with a new unlock code and will void any future updates you may have purchased. Shipping charges will apply.

STEP ONE - DOWNLOAD YOUR PRODUCT

---

**PC UPDATES**      **MAC UPDATES**

STEP TWO - GENERATE NEW UNLOCK FILES

---

**GENERATE**

Register Date: 2020-08-05  
Update Expiry Date: **2020-10-06**

📍 **STEP 2** - Click on "Generate" to get your new 2020 Unlock Key.

PRODUCT UPDATES [View User Guide](#)

---

Current Version 2020 - Released August 2020. [See complete version update list.](#)

If you are having troubles accessing or implementing the downloadable updates, you can send in your current SD card or ask for a new DVD version. \*

\* Please note that this will be considered a new product with a new unlock code and will void any future updates you may have purchased. Shipping charges will apply.

STEP ONE - DOWNLOAD YOUR PRODUCT

---

**PC UPDATES**      **MAC UPDATES**

STEP TWO - GENERATE NEW UNLOCK FILES

---

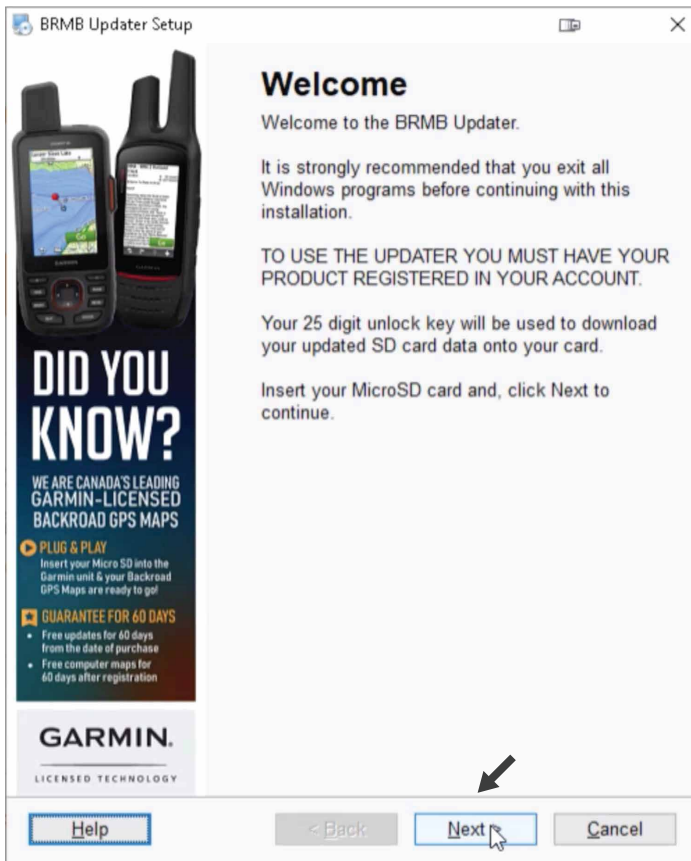
**GENERATE**

Register Date: 2020-08-05  
Update Expiry Date: **2020-10-06**

**Warning:** Once you click the Generate button, the "PC Updates" and "MAC Updates" download buttons will be removed.

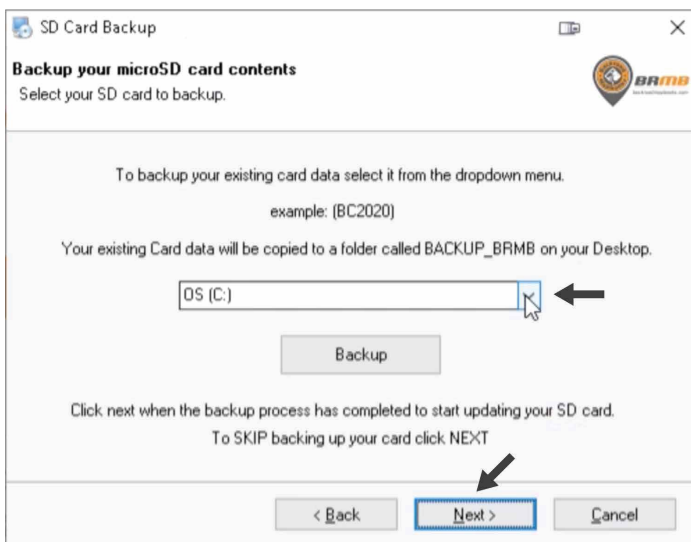
Make the download is successful before you click the "Generate" button.

📍 **STEP 3** - Open the Updater file you just downloaded.  
Then, insert your BRMB SD card and click on "Next" to continue.



📍 **STEP 4** - Read and agree to the Terms of the License Agreement, then click on "Next".

📍 **STEP 5** - You have the option to backup your existing card in case of failure. If you wish to save a backup of your data, select your card location from the dropdown menu and click on "Backup". If you rather skip the backup, click on "Next".



**Warning:** Skipping the backup will result in loss of ANY personal waypoints or tracks you might have saved on your SD card.

📍 **STEP 6** - It's time to load the update on your card!  
Please select your card location from the drop down menu.

BRMB Updater Setup

Select your MicroSD card drive from the dropdown menu.  
example: (BC2020)

OS (C:)

Enter the 25 digit unlock key from your BRMB user account.  
\*Your 25 digit unlock key is located under your registered product in your BRMB account.

Unlock Key

Update

Help < Back Next > Cancel

📍 **STEP 7** - Copy & paste your new 25 digit key from your BRMB User Account and click on the "Update" button.

ALBERTA - SD [2020]

FREE COMPUTER MAPS

View User Guide

Click below to download.

DOWNLOAD FOR MAC

Register Date: 2020-08-05  
Download Expiry Date: 2020-10-05

**COPY** → YOUR UNLOCK INFORMATION

Unlock Key: ET2MAPA6TFAJPNC7D77S5YFGS

GMA File: Download your GMA file

ID Number: 40843

PRODUCT UPDATES

Your maps are up-to-date. See complete version update list.

BRMB Updater Setup

Select your MicroSD card drive from the dropdown menu.  
example: (BC2020)

AB2019 (I:)

Enter the 25 digit unlock key from your BRMB user account.  
\*Your 25 digit unlock key is located under your registered product in your BRMB account.

**PASTE** →

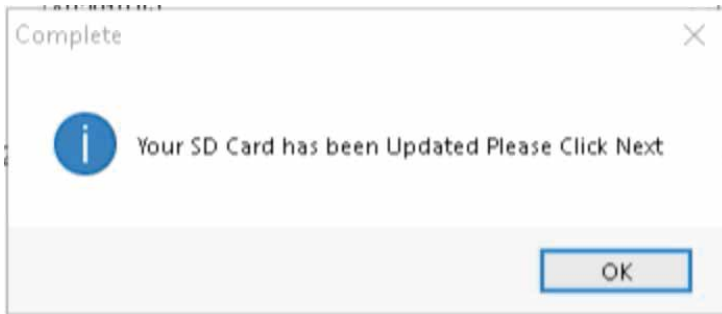
ET2MAPA6TFAJPNC7D77S5YFGS

Update

Help < Back Next > Cancel

📍 ... **AND DONE!** - A pop-up will appear when the update is complete.

Congrats, you now have the latest version of our maps! You can now put your card back into your GPS unit and let's keep the adventures rolling!



### **NOT as easy as it seems?**

Do you have questions or problems with the update? You can contact our Tech Support team at [gps@backroadmapbooks.com](mailto:gps@backroadmapbooks.com) or call 1-877-520-5670 ext 207.